

Description

Operating system: Windows 2000,2003,XP

Communication:

Input: RS485-RS232

Max transmission distance is 1.2 km

Output: RS232 for large display

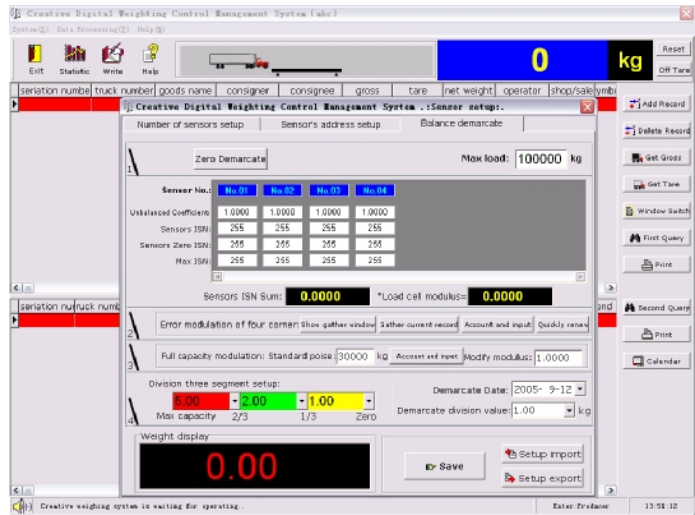
Network card for share data

Expansion:

Telecommuting by internet Monitor video or photointelligent card Traffic light or infrared

Extraordinary function:

Can show detail of anyone load cell Adjust corner error automatically Division automatically

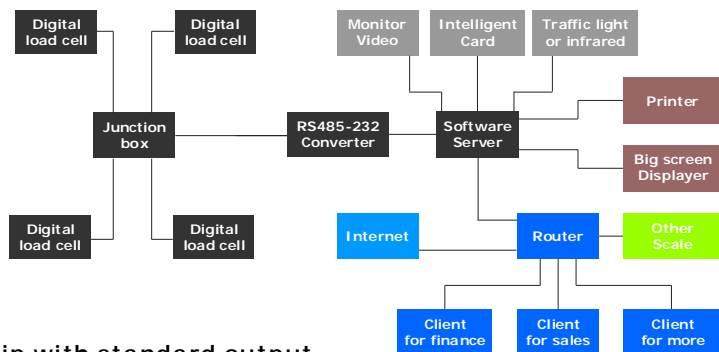


Work Principle

PC sends injunction to respective digital load cell by RS485-232 and junction box, then feedback data to PC, after counting, will display the real weight of scale, this is basically complete weighing process.

PC will save real weight and other information except for readable available data, used for statistic, analy and query.

Printer and big screen displayer can be available in this system, and moreover equip with standard output.



On the base, you can also choose traffic light, monitor video and intelligent card. Or you can work with another scale and share with the same data. Make multi-scales work together. Of course, all above function can be available. If you build internet constructure, so clients can visit and deal with data by net.

- This part is basal, the model of software corresponding is VD-3.0E .
- This part is optional, the model of software corresponding is VD-3.0E-V .
- This part is optional, at the some time, It needs one or more corresponding software for clients, the model of software corresponding is VD-3.0E-L . The client soft is VD-3.0E-LG .
- This part is optional, at the same time, It needs one or more corresponding software for clients, the model of software corresponding is VD-3.0E-I . The client soft is VD-3.0E-IG .

If you want to add other functions , we can develop them according to your requirement.