

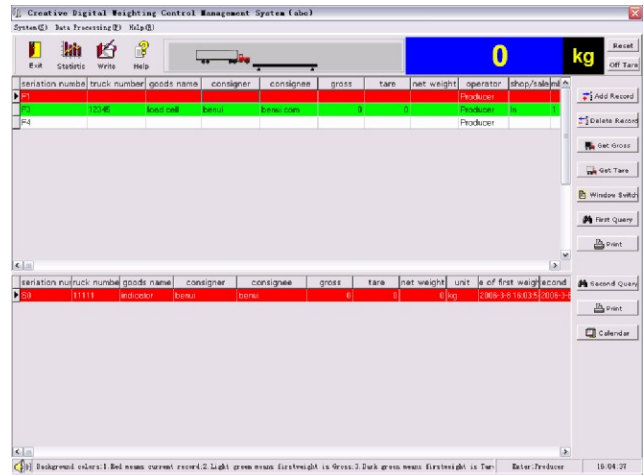
### Description

**Operating system:** Windows 2000,2003,XP

**Communication:** Input: RS232 Max transmission distance is 40m Output: RS232 for large displayer Network card for share data

**Expansion:** Telecommuting by internet Monitor video or photo Intelligent card Traffic light or infrared

**Extraordinary function:**Indicator can operate simply by itself.



### Work Principle

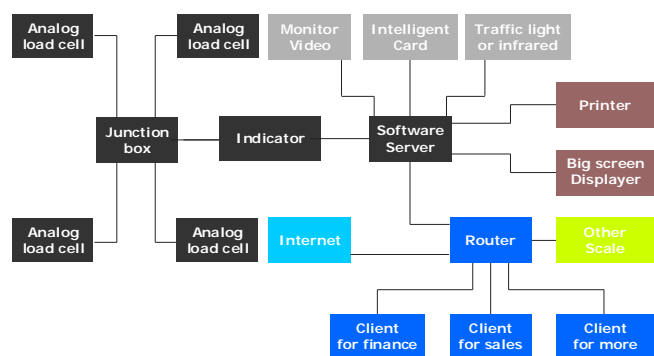
There is a option for using digital load cells with digital indicator or using analogue load cells with analogue indicator.

Most of our indicators can connect with this software by RS232, because they r using same protocol.

Indicator sends the real weight to PC, PC will save real weight and other information except for readable available data, used for statistic, anly and query.

Printer and big screen displayer can be available in this system, and moreover equip with standard output.

On the base, you can also choose traffic light, monitor video and intelligent card. Or you can work with another scale and share with the same data. Make multi-scales work together. Of course, all above function can be available. If you build internet constructure, so clients can visit and deal with data by net.



- This part is basal, the model of software corresponding is VA-3.0E .
- This part is optional, the model of software corresponding is VA-3.0E-V .
- This part is optional, at the same time, It needs one or more corresponding software for clients, the model of software corresponding is VD-3.0E-L . The client soft is VA-3.0E-LG.
- This part is optional, at the same time, It needs one or more corresponding software for clients, the model of software corresponding is VD-3.0E-I . The client soft is VA-3.0E-IG.

If you want to add other functions , we can develop them according to your requirement.